



# GOLD COAST TRANSIT DISTRICT

## ITEM 11: RECEIVE PRESENTATION ON DRAFT FY 2027 OPERATING BUDGET AND CAPITAL PLAN

Presenters:

Christine Feng, CFO/Assistant General Manager

Vanessa Rauschenberger, General Manager



# OUR MISSION

Serving, Moving, and Connecting  
People to Opportunity –  
One Ride at a Time.

# OUR VISION

Revolutionize transportation in Ventura  
County by leading initiatives that improve the  
rider experience, achieve clean air, and drive  
economic vitality.

## QUICK FACTS

- Ridership: 3.6 million annually
- Fixed Route Fare: \$2 per ride, \$1 Reduced
- ADA Paratransit: \$4 per ride
- Operate 4:30am - 12am, 7 days a week
- Fleet Size: 61 Fixed Route + 28 Paratransit
- Employees: 242 Employees



FY 2027

# BUDGET SOURCES OF FUNDING

## Formula Federal Funds

FTA Formula Funds are federal dollars given to public transit agencies every year based on specific formulas including population, ridership, service area, etc.



## Competitive Federal Funds

Unlike formula funds, competitive funds are not guaranteed – transit agencies must apply and compete for them. Examples include Low or No Emissions Grant, Congestion Mitigation and Air Quality Grant (CMAQ)

## Regional Planning Agency



## TDA/LTF 1/4 State Sales Tax

Each county collects the 1/4 cent sales tax and puts it into the Local Transportation Fund (LTF). Allocation formula based on population.

## Other State Funds

Low Carbon Transit Operations Program (LCTOP), TIRCP/ SB 125.

## Programming Process



## Passenger Fares

Fares collected account for roughly 6% of budget.



## Other Sources

Fuel Credits, Advertising Revenue, other.

FY 2027

# OPERATING AND CAPITAL BUDGET OVERVIEW

## Budget Development Process

**MARCH**

Information Gathering

**APRIL**

Preliminary Budget  
Assumptions

**MAY**

Draft Budget to Board  
(Public Hearing)

**JUNE**

Final Budget to Board for  
Consideration

**Proposed Operating Budget is \$38.9M**  
**Non-Operating Expense Budget is \$3.8 M**

- **Balanced with \$5.7 M of SB 125 State Funding**
- **Budget reflects overall 6% increase from FY 26**

**Proposed Capital Budget is \$9.8 M**

- **Focus this year on Bus & Vehicle Replacements**
- **Decrease from FY 26 due to ZEB Project Pause**



FY 2027

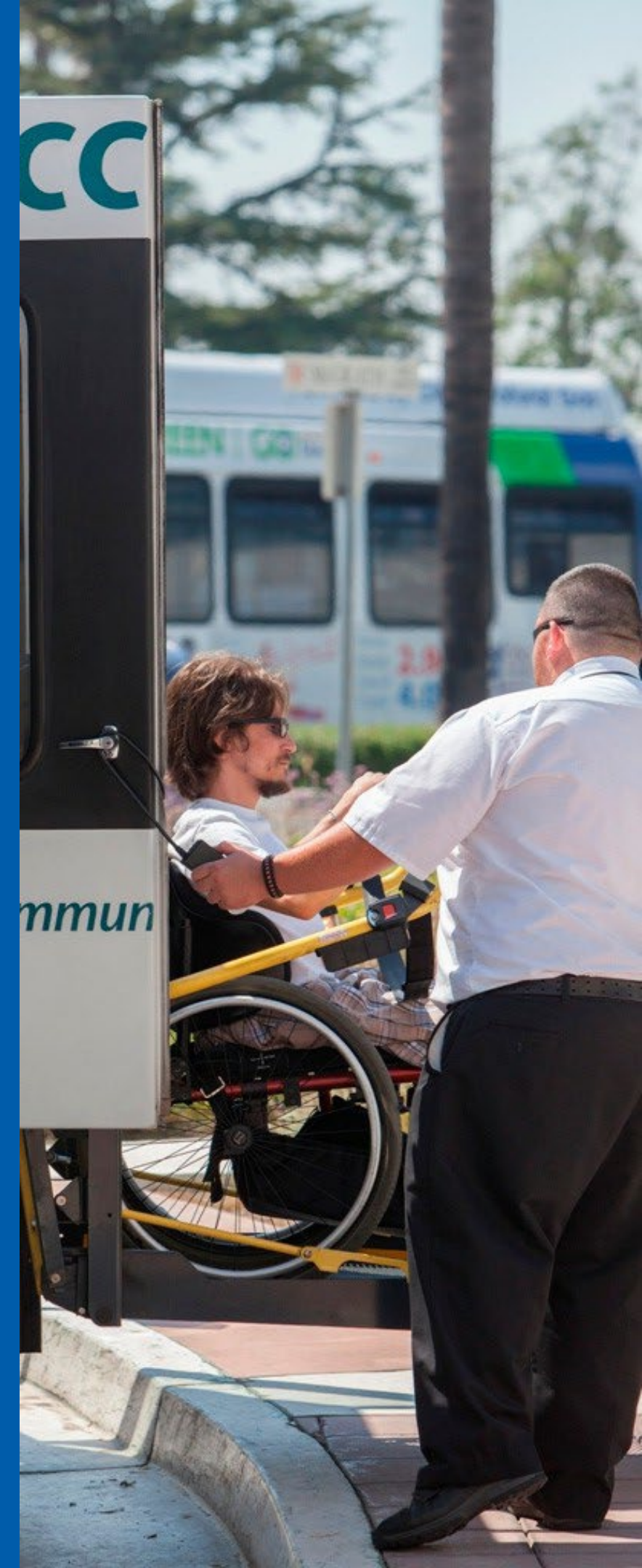
# MAJOR FACTORS IN FY 2027 BUDGET

## Operating Factors

- Service levels flat w/route changes to 1/6/10/11 (SRTP Year 1)
- Wages/Benefits (Increased by \$2.04 M) - COLA's primarily reflect MOUs
- Contract Services (Increased by \$523K) – Services reflect technology, major maintenance projects, security, janitorial, landscape, etc.
- Causality & Liability (Increased by \$474K) – Due to increases in insurance
- Restoration of Intern Program up to 2 FTEs (temporary)

## Savings/New Funding

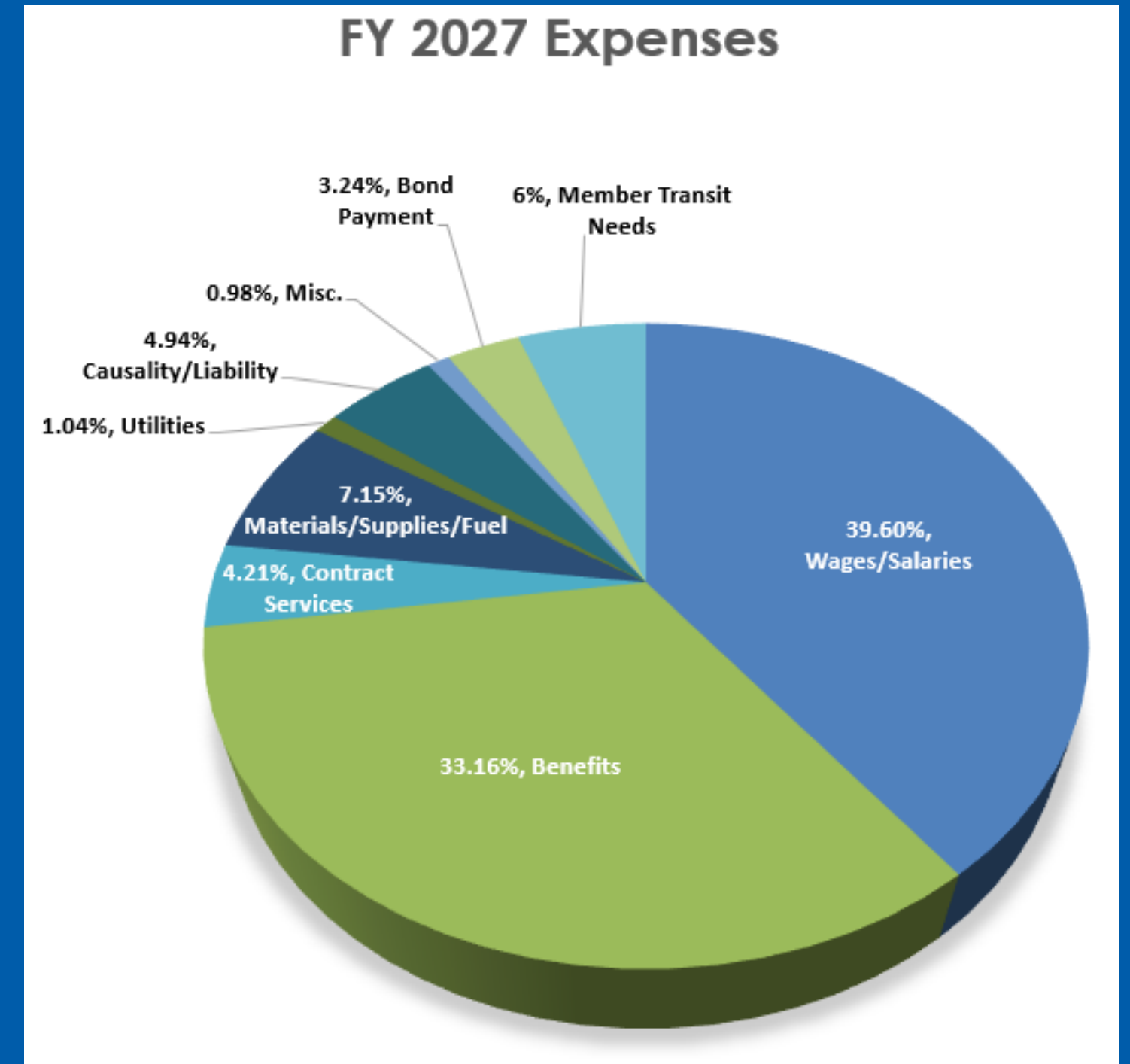
- State Funding (Increased by \$2.2 M) – Reflects continued use of SB125
- Local Transportation Fund (Increased by \$644K)
- Materials/Supplies/Fuel (Decreased by \$196K)
- Miscellaneous Expenses (Decreased by \$132K)
- Decrease in Capital budget due to pause in H2 Project



FY 2027

# BUDGET EXPENSES

| FY 27 Expense Budget  |           |                   |
|---|-----------|-------------------|
| Wages/Salaries  | \$        | 16,910,357        |
| Benefits  | \$        | 14,157,050        |
| Contract Services   | \$        | 1,797,051         |
| Materials/Supplies/Fuel   | \$        | 3,052,420         |
| Utilities   | \$        | 442,000           |
| Causality/Liability   | \$        | 2,110,700         |
| Misc.   | \$        | 419,340           |
| <b>Total Operating</b>  | <b>\$</b> | <b>38,888,917</b> |
|   |           |                   |
| <b>Bond Payment</b> <i>*required annual facility bond payment</i> | \$        | 1,382,038         |
| <b>Member Transit Needs</b>                                       | \$        | 2,427,793         |
| <b>Total-Non Operating and Debt</b>                               | <b>\$</b> | <b>3,809,831</b>  |
| <b>FY 2027 - Total Expense Budget</b>                             | <b>\$</b> | <b>42,698,748</b> |



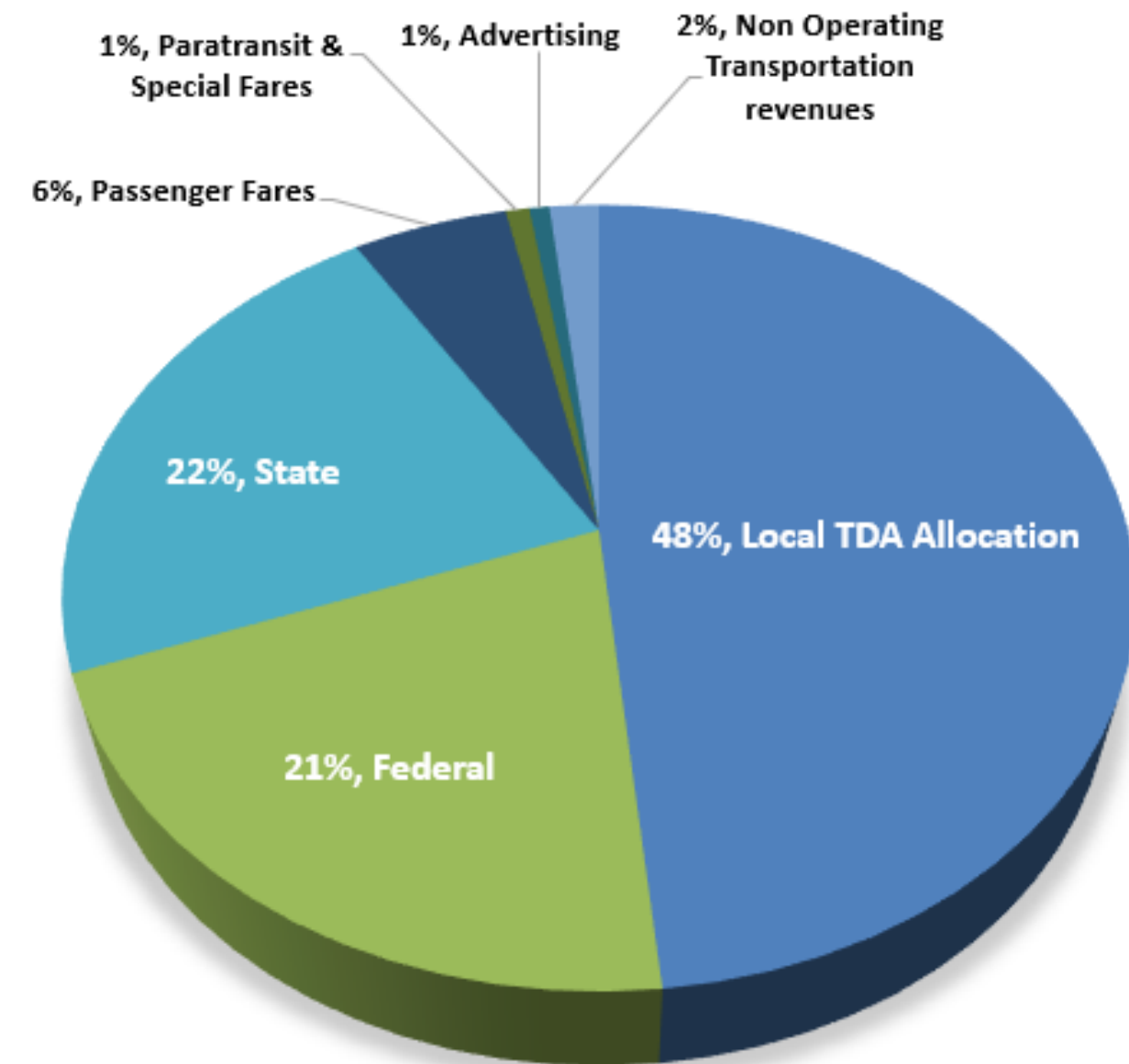
FY 2027

# BUDGET REVENUE FUNDING SOURCES

## Operating Revenues

|                                       |           |                   |
|---------------------------------------|-----------|-------------------|
| Local TDA Allocation                  | \$        | 20,672,522        |
| Federal                               | \$        | 8,899,823         |
| State * Includes \$5.7 M SB 125       | \$        | 9,361,403         |
| Passenger Fares                       | \$        | 2,350,000         |
| Paratransit & Special Fares           | \$        | 360,000           |
| Advertising                           | \$        | 305,000           |
| Non Operating Transportation revenues | \$        | 750,000           |
|                                       | <b>\$</b> | <b>42,698,748</b> |

## FY 2027 Revenue



# FY 27 Budgeted Positions by Department

| Position                                     | FY 2026<br>Approved Budget | FY 2027 Proposed<br>Budget Changes | FY 2027<br>Proposed Budget |
|--|----------------------------|------------------------------------|----------------------------|
| <b>Bus Operators :</b>                       |                            |                                    |                            |
| Bus Operator - Fixed Route                   | 126.0                      | 0.0                                | 126.0                      |
| Bus Operator - Demand Response (Paratransit) | 40.0                       | 0.0                                | 40.0                       |
| <b>Maintenance &amp; Administration:</b>     |                            |                                    | <b>0.0</b>                 |
| Operations Management                        | 26.0                       | 0.0                                | 26.0                       |
| Maintenance                                  | 34.0                       | 0.0                                | 34.0                       |
| Executive                                    | 2.0                        | 0.0                                | 2.0                        |
| Finance                                      | 11.0                       | 0.0                                | 11.0                       |
| Human Resources                              | 3.0                        | 0.0                                | 3.0                        |
| Planning & Marketing                         | 9.0                        | 0.0                                | 9.0                        |
| Interns - General                            | 0.0                        | 2.0                                | 2.0                        |
| <b>TOTAL</b>                                 | <b>251.0</b>               | <b>2.0</b>                         | <b>253.0</b>               |
| <b>Operators</b>                             | 166.0                      | 0.0                                | 166.0                      |
| <b>Non-Operators</b>                         | 85.0                       | 2.0                                | 87.0                       |
| <b>Total</b>                                 | <b>251.0</b>               | <b>2.0</b>                         | <b>253.0</b>               |

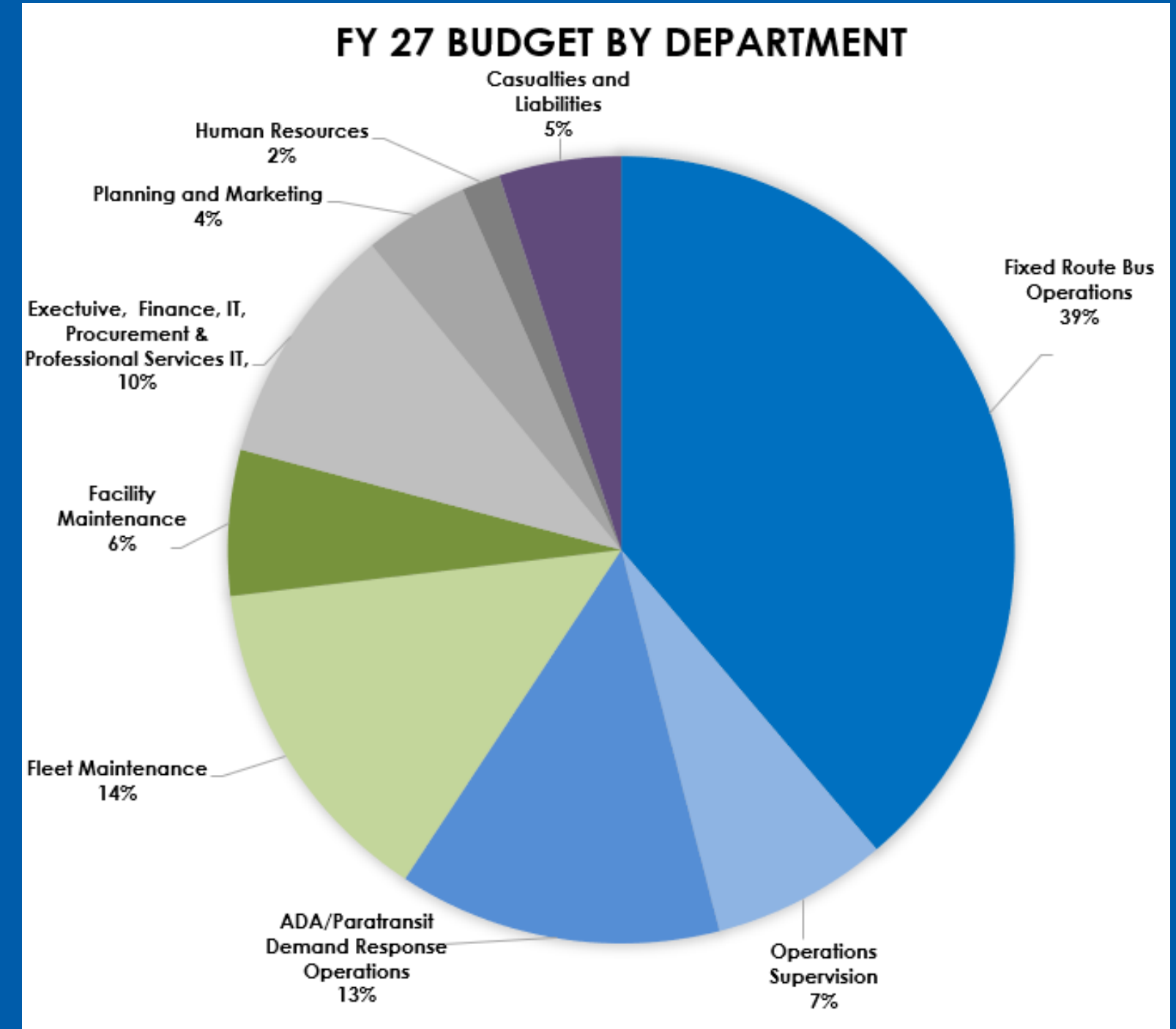
- All budgeted positions from FY 26 included in draft FY 27 budget
- Includes restoration of Intern program up to 2 FTEs (temporary)

# FY 27 Operation Budget by Department

| Category                                 | OPERATIONS                             |                       |  | MAINTENANCE         |                      | ADMINISTRATION                     |                        |                 | Total             |
|--|--|-----------------------|--|---------------------|----------------------|------------------------------------|------------------------|-----------------|-------------------|
|  | Operations (Fixed Route Bus Operators) | Operations Management | ADA/Paratransit Operations Demand Response Bus Operators | Vehicle Maintenance | Facility Maintenance | Executive Administration & Finance | Planning and Marketing | Human Resources |                   |
| Wages/Salaries                           | 7,982,418                              | 1,527,605             | 2,620,473  | 1,678,474           | 739,428              | 1,349,400                          | 657,737                | 354,822         | 16,910,357        |
| Benefits                                 | 7,026,738                              | 1,252,891             | 2,118,957  | 1,354,434           | 693,778              | 1,015,758                          | 480,816                | 213,678         | 14,157,050        |
| Services                                 | 31,500                                 | -                     | 10,000   | 191,460             | 289,500              | 969,072                            | 300,519                | 5,000           | 1,797,051         |
| Materials                                | 22,723                                 | 9,240                 | 409,000  | 2,089,157           | 119,800              | 278,000                            | 122,500                | 2,000           | 3,052,420         |
| Utilities                                | -                                      | -                     | -  | -                   | 442,000              | -                                  | -                      | -               | 442,000           |
| Casualties and Liabilities               | -                                      | -                     | -  | -                   | -                    | 1,950,000                          | 119,000                | 41,700          | 2,110,700         |
| Misc                                     | 10,000                                 | 20,000                | 5,000  | 76,340              | 40,500               | 267,500                            | -                      | -               | 419,340           |
| <b>Department total Operating Budget</b> | <b>15,073,379</b>                      | <b>2,809,736</b>      | <b>5,163,430</b>   | <b>5,389,865</b>    | <b>2,325,007</b>     | <b>5,829,730</b>                   | <b>1,680,571</b>       | <b>617,200</b>  | <b>38,888,917</b> |

Bond payment 1,382,038  
Member Transit Needs 2,427,793

Total Operating Expenses- FY 2027 **42,698,748**



FY 2027

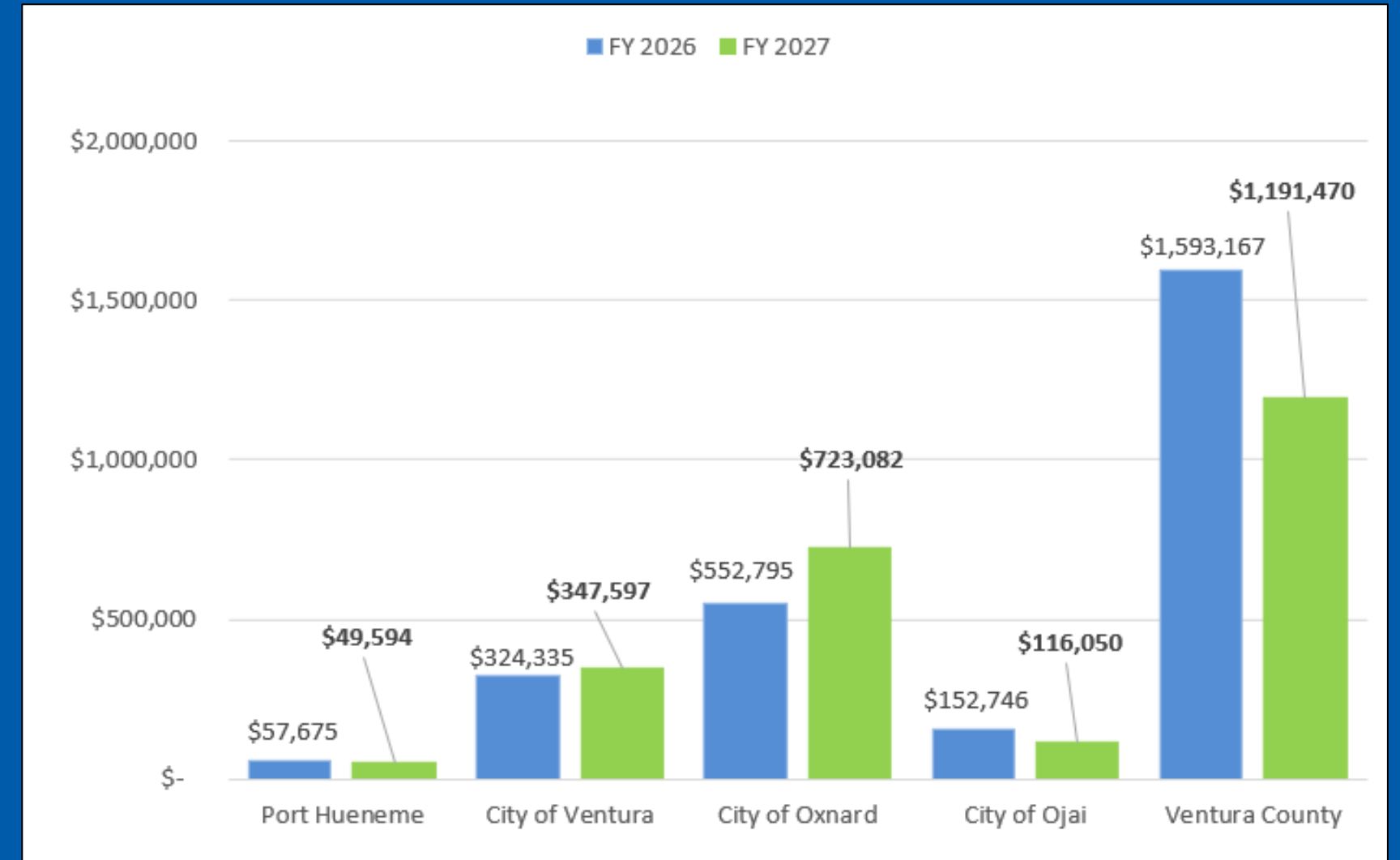
# MEMBER AGENCY TRANSIT FUNDING

Total funding requests from member agencies for recurring transit needs:

**\$2.43 million**

Includes adjustments for carryover amounts for Ventura County, Ventura, Ojai, and Port Hueneme.

- Member Funded Transit Services Oxnard/Ventura
- Transit Center Maintenance
- Kanan Road Shuttle/East County Transit Alliance (ECTA) Bus
- Stop Maintenance



Ojai Trolley



Ventura Transit Center



Oxnard Transit Center



Bus Stop Maintenance

FY 2027

# DEBT - BOND PAYMENT

The FY 27 Budget Includes the Annual \$1.38 Million Bond Payment.

A key milestone in GCTD history occurred when the District relocated to the new facility in July 2019. To fund the facility, the District secured commitments for over 50% of the total project cost in Federal and State grants, with the remainder coming from a \$22 million Certificates of Participation (COPs).

## Opportunities:

- Seek to utilize the facility to full capacity in future (facility fixed cost / cost per bus)
- Seek funding for early repayment of COPs (to save interest) – This option is available next year.



| Year Ending<br>June 30 | Principal            | Interest             | Total                |
|------------------------|----------------------|----------------------|----------------------|
| 2026                   | \$ 475,000           | \$ 909,506           | \$ 1,384,506         |
| 2027                   | 495,000              | 887,038              | 1,382,038            |
| 2028                   | 520,000              | 861,663              | 1,381,663            |
| 2029                   | 550,000              | 834,225              | 1,384,225            |
| 2030                   | 580,000              | 804,563              | 1,384,563            |
| 2031-2035              | 3,360,000            | 3,559,956            | 6,919,956            |
| 2036-2040              | 4,140,000            | 2,779,225            | 6,919,225            |
| 2041-2045              | 5,265,000            | 1,648,125            | 6,913,125            |
| 2046-2048              | 3,855,000            | 295,625              | 4,150,625            |
| <b>Total</b>           | <b>\$ 19,240,000</b> | <b>\$ 12,579,926</b> | <b>\$ 31,819,926</b> |

FY 2027

# CAPITAL PLAN - FUNDING IDENTIFIED

Capital Project projects included in the FY 2027 Budget are projects with grant funding that has been identified for a specific use, primarily **bus replacements**, and can not be used for Operating purposes.

## FY 2027 CAPITAL EXPENDITURES

|  |                    |
|--|--------------------|
| Replacement Fixed Route Buses, CNG (8 Gilligs)     | \$6,536,000        |
| Replacement Demand Response, CNG (8 Cutaways)      | \$1,615,000        |
| Replacement Service Vehiclea (5 Relief Sedans)     | \$248,000          |
| Replacement Service Vehiclea (2 Supervisor Vana)   | \$100,000          |
| Facility Upgrades for Energy Savings (Placeholder) | \$1,242,000        |
| Business Systems (IT Projects)                     | \$62,000           |
| <b>TOTAL CAPITAL EXPENDITURES</b>                  | <b>\$9,803,000</b> |



# FY 2027 BUDGET THREE - YEAR COMPARISON

- Proposed FY 2027 Budget is Balanced
- Represents a 6% Increase Over FY 2026

## FUNDING SOURCES

|   | FY 2025              | FY 2026              |           | FY 2027              |           |
|---|----------------------|----------------------|-----------|----------------------|-----------|
|   | Approved Budget      | Approved Budget      | Change    | Proposed Budget      | Change    |
| <b>OPERATING BUDGET</b>   |                      |                      |           |                      |           |
| <b>LOCAL OPERATING REVENUE</b>                                    |                      |                      |           |                      |           |
| Total Local Operating Revenues (Fares, Advertising, etc)          | \$ 3,530,970         | \$ 3,650,000         | 3%        | \$ 3,765,000         | 3%        |
| <b>LOCAL TRANSPORTATION FUNDS / TDA Allocation to GCTD</b>        |                      |                      |           |                      |           |
| Total Local Transportation Funds / Transportation Development Act | \$ 20,631,299        | \$ 20,028,323        | -3%       | \$ 20,672,522        | 3%        |
| <b>FEDERAL TRANSIT ADMINISTRATION</b>                             |                      |                      |           |                      |           |
| Total Federal Funds (Formula 5307, 5310, 5339)                    | \$ 8,696,270         | \$ 9,354,523         | 8%        | \$ 8,899,823         | -5%       |
| <b>STATE FUNDS</b>  |                      |                      |           |                      |           |
| Total State Operating including SB125 (One time funding)          | \$ 5,775,005         | \$ 7,205,378         | 25%       | \$ 9,361,403         | 30%       |
| <b>Total Operating Revenues--Funding Sources</b>                  | <b>\$ 38,633,544</b> | <b>\$ 40,238,224</b> | <b>4%</b> | <b>\$ 42,698,748</b> | <b>6%</b> |

## FUNDING USES

|   | FY 2025              | FY 2026              | Change     | FY 2027              | Change     |
|---|----------------------|----------------------|------------|----------------------|------------|
| <b>EXPENSE BUDGET</b>                           |                      |                      |            |                      |            |
| <b>OPERATING BUDGET</b>                         |                      |                      |            |                      |            |
| Wages/Benefits                                  | \$ 25,893,422        | \$ 29,026,048        | 12%        | \$ 31,067,406        | 7%         |
| Contract Services                               | \$ 2,580,550         | \$ 1,274,086         | -51%       | \$ 1,797,051         | 41%        |
| Materials/Supplies/Fuel                         | \$ 3,618,300         | \$ 3,248,366         | -10%       | \$ 3,052,420         | -6%        |
| Utilities                                       | \$ 450,000           | \$ 437,000           | -3%        | \$ 442,000           | 1%         |
| Causality and Liability                         | \$ 1,340,000         | \$ 1,636,500         | 22%        | \$ 2,110,700         | 29%        |
| Misc. (Fees, Promotions, Travel, Training, etc) | \$ 509,500           | \$ 551,000           | 8%         | \$ 419,340           | -24%       |
| <b>Total Operating</b>                          | <b>\$ 34,391,772</b> | <b>\$ 36,173,000</b> | <b>5%</b>  | <b>\$ 38,888,917</b> | <b>8%</b>  |
| <b>Bond Payment and Member distribution</b>     |                      |                      |            |                      |            |
| <b>Total Non-Operating</b>                      | <b>\$ 4,241,772</b>  | <b>\$ 4,065,224</b>  | <b>-4%</b> | <b>\$ 3,809,831</b>  | <b>-6%</b> |
| <b>Total Expenses:</b>                          | <b>\$ 38,633,544</b> | <b>\$ 40,238,224</b> | <b>4%</b>  | <b>\$ 42,698,748</b> | <b>6%</b>  |



FY 2027

# RECOMMENDATION

**Staff will continue to work on refining the budget over the next month.**

**IT IS RECOMMENDED THAT THE BOARD OF DIRECTORS:**

Conduct Public Hearing to Receive Public Comments on the Proposed DRAFT FY 2027 Operating & Capital Budget.

A final budget will be brought back for the Board to Consider for Approval in June.

