

OPERATIONS & MAINTENANCE REPORT

PRESENTATION TO GCTD BOARD OF DIRECTORS

May 4, 2022



GCTD Maintenance K.P.I.

Key Performance Indicators



TOTAL REVENUE MILES	146,729
TOTAL ROADCALLS	15
MAJOR ROADCALLS TOTAL	10
OTHER ROADCALLS TOTAL	5
MECHANIC DISPATCHED ROADCALLS	6
TOTAL BUS TRADES	20
SERVICE INTERRUPTIONS	13
BUSES TOWED	0

MILES BETWEEN MAJOR ROADCALLS	14,673
MILES BETWEEN OTHER ROADCALLS	29,346
MBRC	9,782

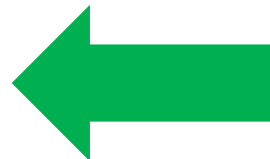
7,500 Miles Goal



MBRC = Miles Between Road-calls

Customer Service Interruptions	13
Miles Between Customer Service Interrupt	11287

Customer Service Interruptions are delays to GCTD customers of 5 minutes or more



10,000 Miles Goal

GCTD Maintenance K.P.I. Key Performance Indicators



Missed service 138.6 miles
Boarding: 199,590
Revenue Miles : 146,868



On Time Performance: **87%**

 **90% goal**

Missed Service: **0.01%**

 **Less than 1% goal**

Preventable Accidents: **1**

1 per 100,000 miles goal

Customer Contacts: **5**

1 per 10,000 Boardings



Zero-Emission Roll-Out Plan

Zero-Emission Bus Analysis



The Zero-Emission Roll-Out Plan Project is currently 70% complete.

Stantec is currently working on the capital cost and facility build-out portion of the plan.

Did you know?

Starting in 2029, all new public transit buses bought in California must be zero-emission.



GCTD Unhoused, Mental Health & Addiction Community Outreach

- Gold Coast Transit is collaborating with Ventura County Behavior Health, VCTC, SEIU, Teamsters & Non-Profits to help educate our community and GCTD staff about how to identify and handle people with mental health and addiction issues.



- GCTD has met with the VCBH RISE task force and created a reporting format for behavioral health experts to respond quickly to those in need of services.
- Services are reaching those most in need. Our third meeting will be held later this month.

New Gillig Buses

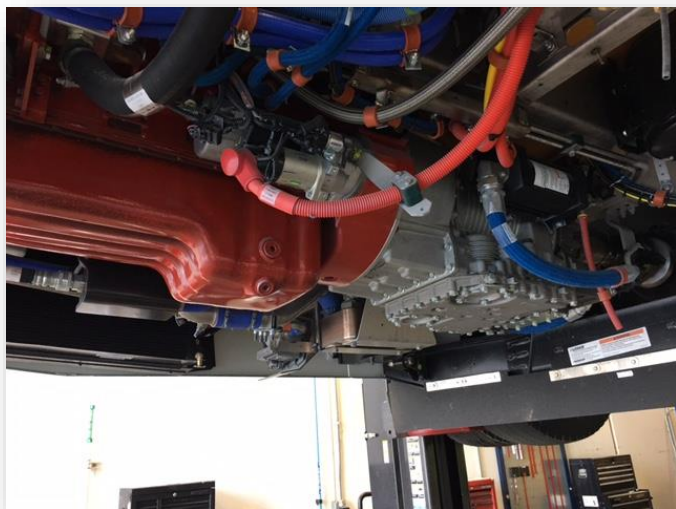
All new buses start off on the assembly line as 2 frame rails



Rear ends and engines are attached in stations #2 & #3



New Gillig Buses



Visit to A/C Transit



Guide Dog Training

17 guide dogs trained last month on boarding GCTD buses. The training was held in Ojai and the pups boarded the bus at the turn around and rode to the Y at 33 / 150 junction.



GUIDE DOGS OF AMERICA



Channel Islands High School

26 Students from Channel Islands High School toured GCTD's facility and found out about how GCTD provides public transit and future employment opportunities within the District. Rio Mesa High School visiting tomorrow.



QUESTIONS?