

MAINTENANCE REPORT

PRESENTATION TO GCTD BOARD OF DIRECTORS

March 2, 2022



Service Workers



- Clean all GCTD vehicles nightly
- Detail vehicles inside and out
- Fuel/Check Fluids on buses nightly
- Empty farebox cash vaults
- Wash buses weekly or as needed
- Sanitize all buses



Service Workers



GCTD vehicles are cleaned and fueled nightly



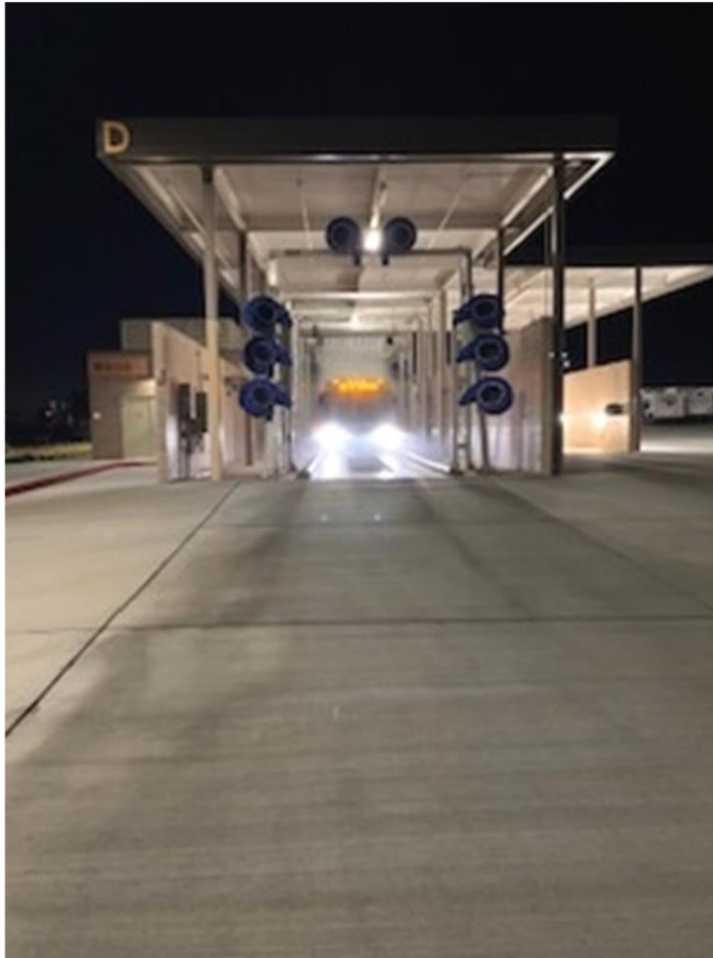
Service Workers

GCTD vehicles at fuel island waiting to be serviced



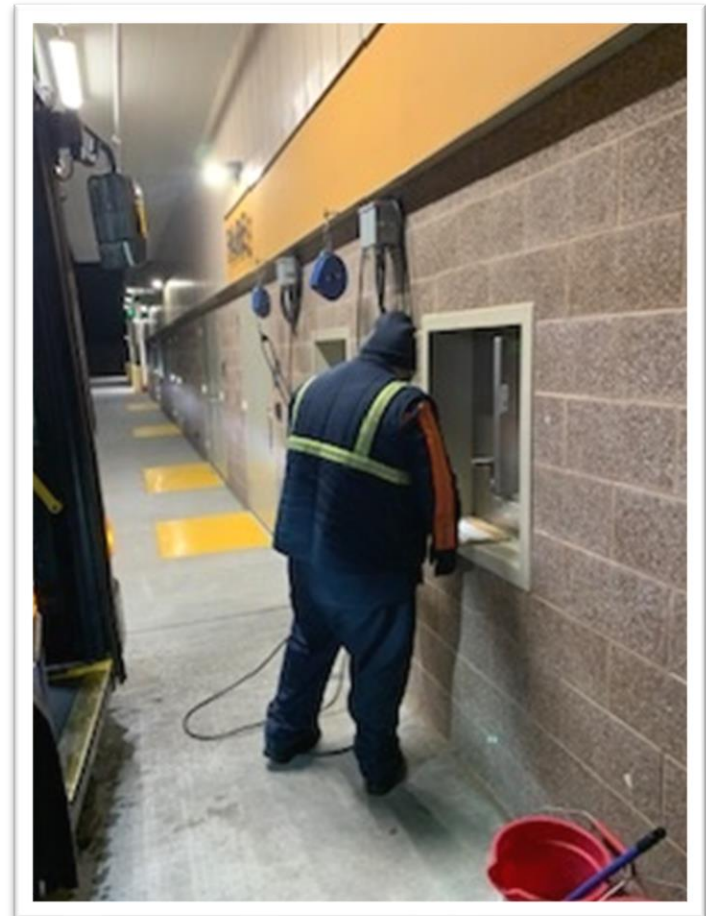
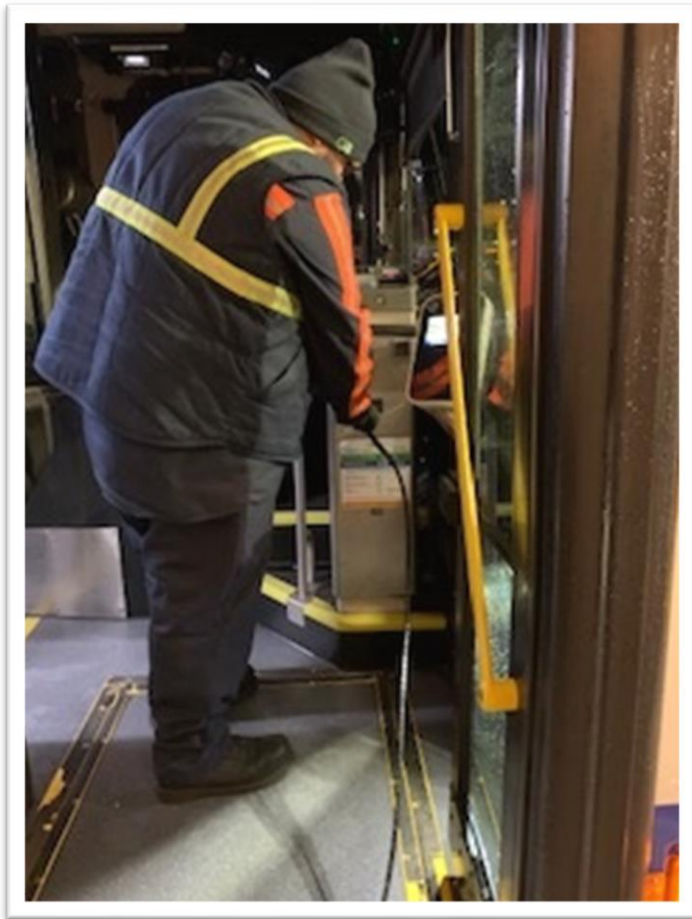
Service Workers

GCTD vehicles are washed weekly or as needed.



Service Workers

GCTD vaults are pulled twice weekly



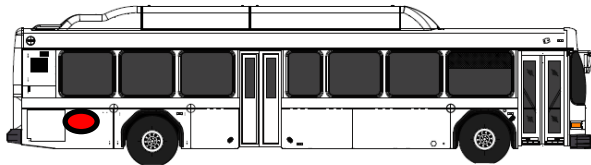
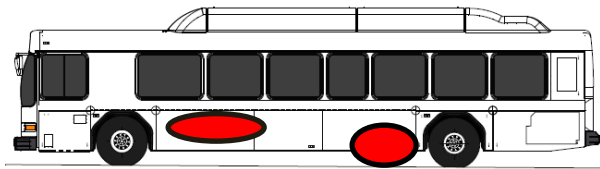
Upkeep on Exterior of Bus



BUS INSPECTION FORM

BUS # _____

Date: _____



GCTD conducts exterior inspections as part of the preventative maintenance program. Any scuffs or scratches are buffed out by GCTD's Andy Carpio, Service Worker II.



Fueling Station Maintenance



Fueling Station Maintenance

- In the process of completing the recommended 2000-hour service with Clean Energy.
- Clean Energy will monitor the station remotely. Will notify staff when there are alarms.



Fueling Station Maintenance

Clean Energy identified several worn parts



QUESTIONS?